

back to:

www.touratech-usa



TOURATECH

Pannier lock installation tips.

part# 055-0042

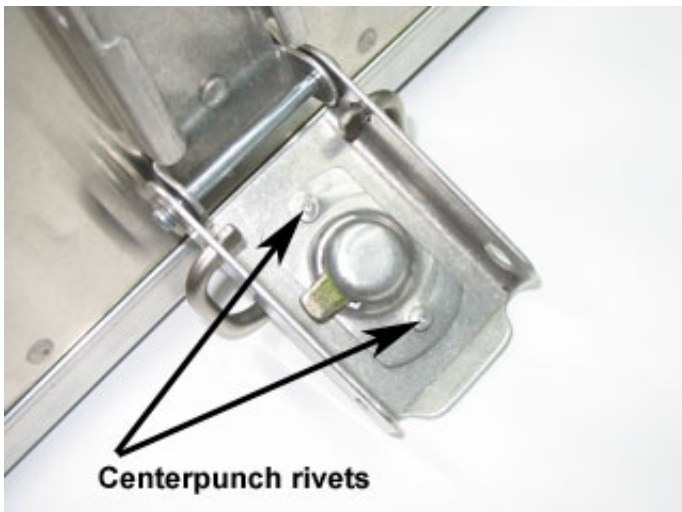
Use these suggestions at your own risk.

- These instructions are new and have not been tested by independent installers.
- The instructions are not complete.
- Touratech and Touratech-USA assume no responsibility for errors using these suggestions.

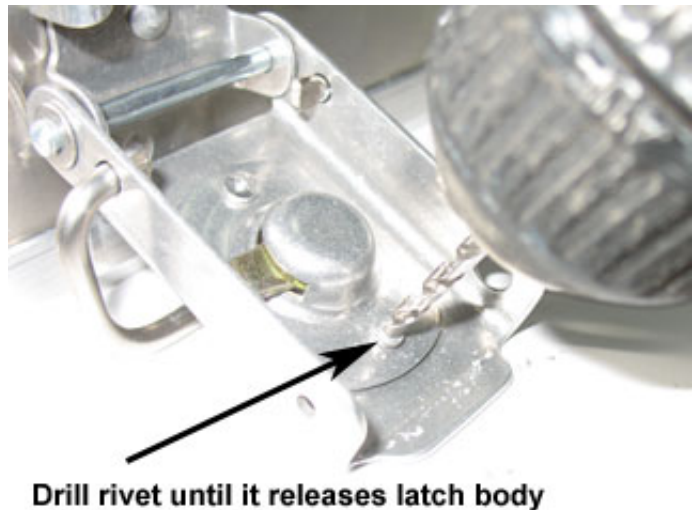
If you have any doubts about your ability to install the locks, please contact a professional installer.

Synopsis

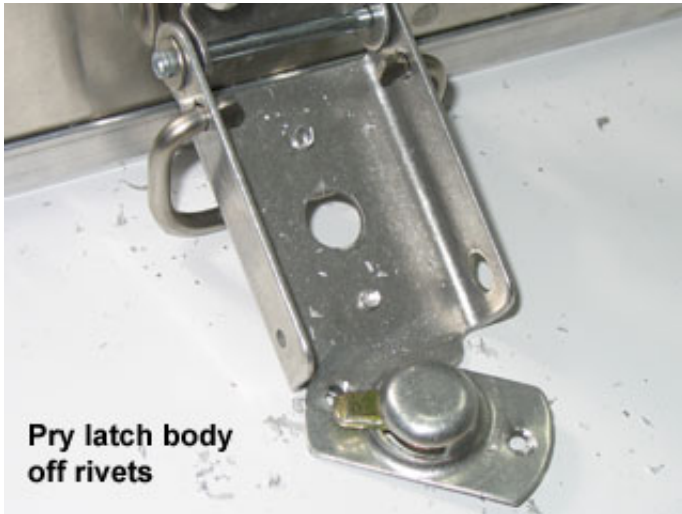
- 1) Drill** out the aluminum rivets holding the coin-locks.
- 2) Remove** the coin-lock.
- 3) Place** the template-sticker on the pannier latch.
- 4) Enlarge** the holes to the 'double-D' shape using a round file.
- 5) Install** the key-lock.



Centerpunch the soft aluminum rivets on the coin-latch BACKSIDE.

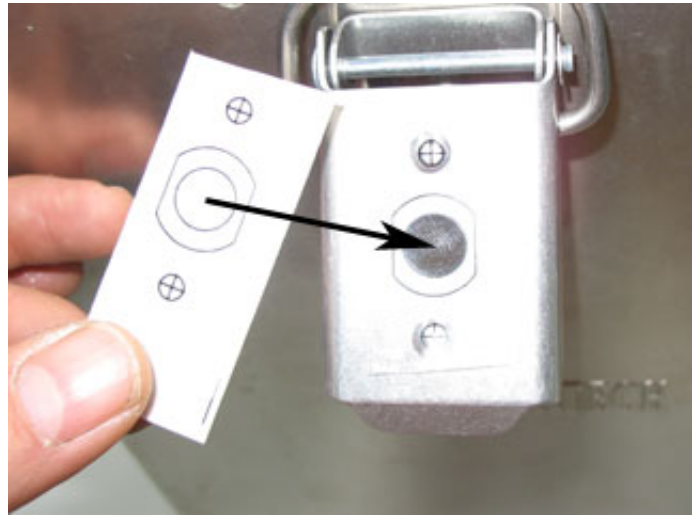


Be careful not to drill all the way through. Just drill enough that the mushroomed rivet head comes off.



**Pry latch body
off rivets**

Note that the rivet was drilled just enough to release the coin-latch mechanism. The round rivet head remains on the other side of the latch handle.



Place template.

Place the filing template on the frontside of the latch. Align the center hole and then put the 'cross' on the rivet heads. This is not a critical alignment - just get it close.



Cut a peice of wood to support the latch handle.

A 2"X2" (1.5"square size) cut to 12 3/8" (=31.5cm) long to support the latch helps a lot. Enlarging the hole is easy and quick with a file



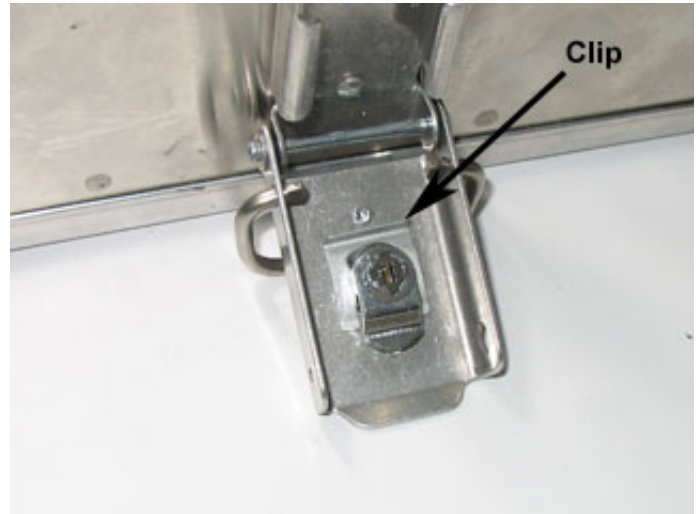
Enlarge the hole:

With a file, enlarge the hole until it is the shape as on the template. When the hole is fully enlarged, the lock can be inserted.

DO NOT disassemble the lock, it fits thru the hole with the locking tang in place. Removing the small circlip from the lock can allow tiny parts to be lost.

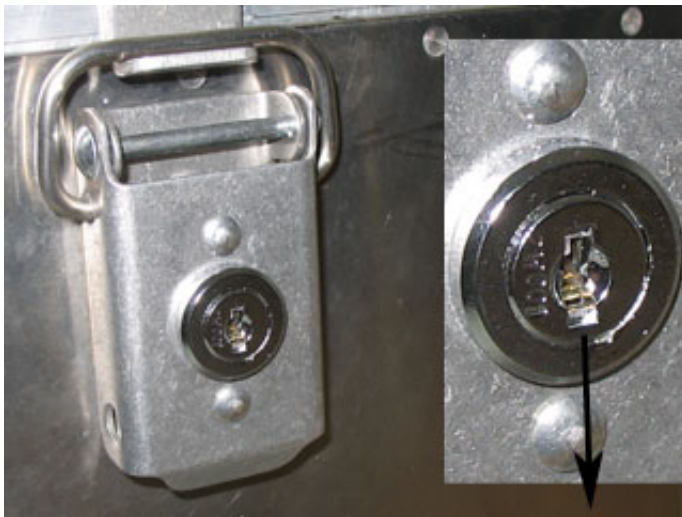
because the latch is aluminum. A Dremel would work too.

Then deburr the hole so the clip slides on easier in the next step



Slide the clip into the slot on the lock body. It is a fairly shallow slot.

Ensure that the clip has engaged the shallow slot to retain the lock body



Lock ready for use.

We like to install them with the keyhole 'down'.

http://www.touratech-usa.com/instl/instl_055-0042.html